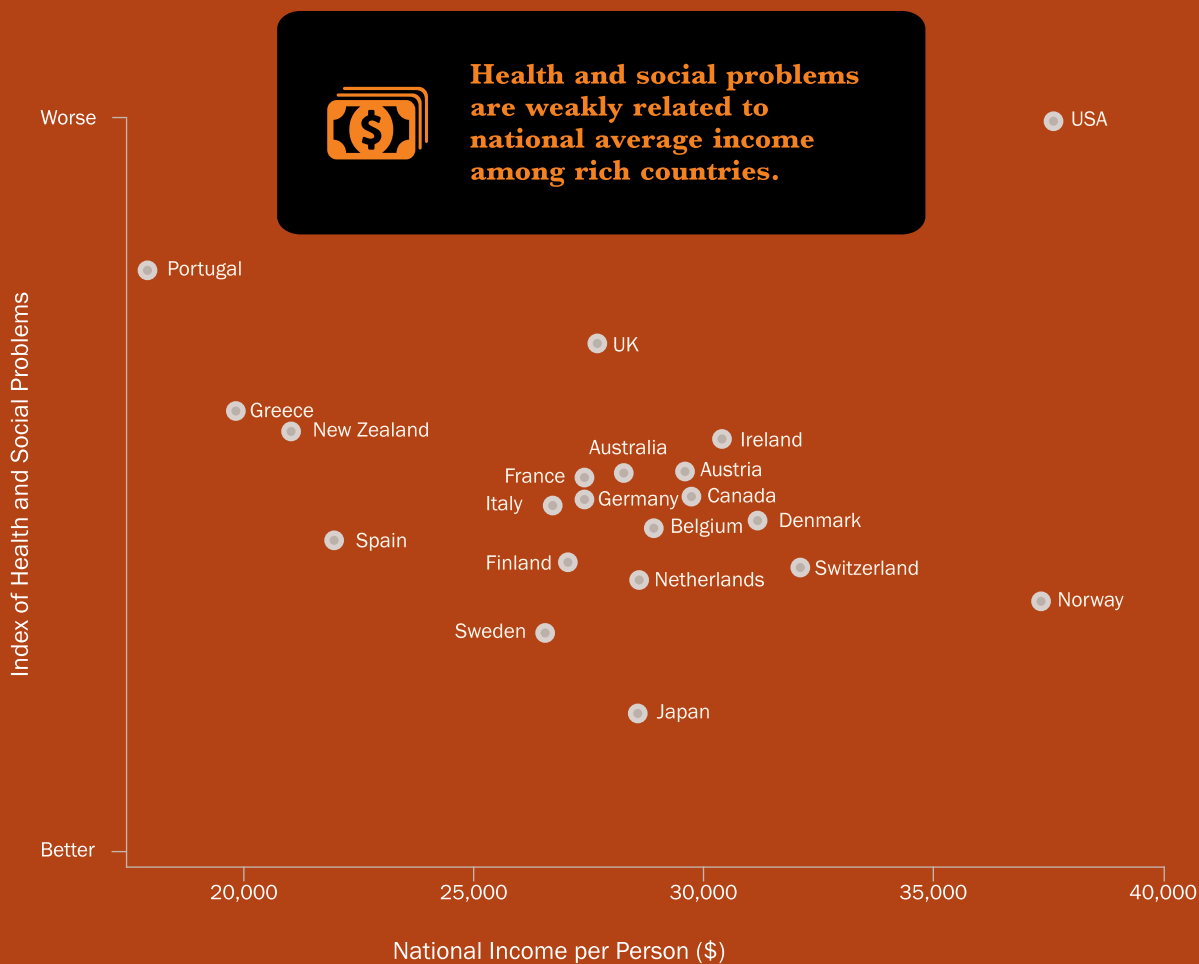


Inequality and Healthy Societies

The *Spirit Level* book by **Richard Wilkinson** and **Kate Pickett** is a ground breaking study of the effects of inequality in high income countries. Among 23* selected countries, the study shows that the trend of health and social problems is greatly affected by the income inequality rather than the average income.



*Out of first 50 rich countries with more than three million population, according to World Bank's 2002 data.

The international index used to develop the measure of social and health problems. It has the following 10 components

- 
Life Expectancy
- 
Teenage Births
- 
Obesity
- 
Mental illness
- 
Homicides
- 
Imprisonment Rates
- 
Mistrusts
- 
Social Mobility
- 
Education
- 
Infant Mortality Rate

